

Parklets Project

RESEARCH REPORT

19 March 2021

Ross Smith Consulting

Parklet Programs

Location	Description	Additional Information
Wodonga (Junction Place)	Shipping Container Pods	Cleaned once a week by City of Wodonga. Approximate cost: \$50k installed Supplier: Wotbox (Albury) Funded by the Victorian Government under the Local Councils Outdoor Eating and Entertainment Package. Information provided by the Economic Development team.
Wangaratta (Murphy and Reid Streets)	Outdoor Dining Decks	Businesses supplied the furniture. No roads approval. Limited period to 30/6/21. Businesses submitted an expression of interest. Heavily used during peak periods, light use outside peak periods. Funded by the Victorian Government under the Local Councils Outdoor Eating and Entertainment Package. Information provided by the Economic Development team.
Moreland City Council	Moreland Parklet Program	Located on a road signed <50kmh Council offer a 6 month all inclusive trial (\$2121.80 for one space, \$1060.90 for additional space). Businesses can also design, construct and maintain their own site (application fee of \$212.20, \$530.45 for one space, \$371.30 for additional space). 1 year with option to renew. Grants of \$3000 available. Documents: Moreland Parklet Program Guidelines, Standard Parklet Design Detail, Long Term Parklet Application, Parklet Funding Grant Funded by the Victorian Government under the Local Councils Outdoor Eating and Entertainment Package. https://www.moreland.vic.gov.au/about-us/projects/shopping-area-and-streetscape-projects/parklet-program/
City of Adelaide	City of Adelaide Parklet Program	Privately funded parklets based on San Francisco model. Six parklets now operating in the city. Parklets offer greenery, tables/chairs and shade. Intent is to support the economic prosperity of the sponsoring business. https://www.cityofadelaide.com.au/business/permits-licences/parklets/

Waverly Council	Parklet Program	<p>Transportable parklets which move around the city. Encourage the public to stop, rest and have a conversation in bustling commercial areas. Maintained by business owners and community groups. Includes seats and planter boxes.</p> <p>https://www.waverley.nsw.gov.au/residents/trees_and_gardens/urban_gardening/shared_garden_groups/shared_gardens/parklets_-_charing_cross,_mcpherson_street,_hall_street</p>
Tweed Shire Council (Murwillumbah)	Tweed Green Parklet, Public Art and Activation Project	<p>Provides seating, greenery and an interactive space for the community. Removable parklets. Eight week pilot project involving two temporary parklets. Total budget is \$137000 (\$100000 from the NSW Government and \$37000 from Council).</p> <p>https://www.yoursaytweed.com.au/parklet</p>
City of Port Phillip	Parklet Program	<p>Temporary installations, subject to community feedback. Businesses fund the design, build, installation, maintenance and removal of the parklets. Council provides planter boxes and DDA ramps. Documents: Business Parklets Guide, Public Space Trader Application Guide</p> <p>https://www.portphillip.vic.gov.au/council-services/business-in-port-phillip/business-parklets</p>
Marybyrnong City Council	Parklet Program	<p>Six month trial. Expressions of Interest from traders to install temporary alfresco seating areas in Council parking bays. 29 parklets were supplied and installed by Council. Road safety audit is undertaken for each parklet which informs the design. Furniture is installed and removed daily by the business. Traders must ensure adequate and regular cleaning. Shared use where practical. Will be removed at the end of the trial if not purchased by traders. Funded by the Victorian Government under the Local Councils Outdoor Eating and Entertainment Package.</p> <p>https://www.yourcityyourvoice.com.au/parklets/widgets/313335/faqs</p>

Port Stephens Council	Outdoor Eating Parklets	<p>Five car parking spaces to be converted to parklets in Shoal Bay. Include seating, tables, plants and art. Trial proposed for 2021.</p> <p>Significant trader objection, based on car parking loss, following business engagement.</p> <p>Funded under NSW Government's Streets as Shared Spaces program.*</p> <p>https://www.portstephensexaminer.com.au/story/7105234/parklets-cause-space-dispute/</p>
Mildura City Council	Space Cube Parklets	<p>3 x temporary parklets in the CBD to increase outdoor dining capacity. Hired by Council as part of a trial through to 30 June 2021.</p> <p>Small nett loss of parking. Council promoting free parking areas.</p> <p>Funded by the Victorian Government under the Local Councils Outdoor Eating and Entertainment Package.</p> <p>https://www.mildura.vic.gov.au/Latest-News/Space-cube-parklets-to-expand-outdoor-dining</p>
City of Greater Geelong	Parklet Trial	<p>Council identified three sites for a 3 month trial and developed concept plans which they shared with the community.</p> <p>Supported by the waiving of fees and grants.</p> <p>Funded by the Victorian Government under the Local Councils Outdoor Eating and Entertainment Package.</p> <p>https://www.geelongaustralia.com.au/news/item/8d8c46804c85e81.aspx</p>
Mornington Peninsula Shire	Outdoor Dining Program	<p>Council issued parklet permits.</p> <p>Short term 3 months – Council provides the traffic protection while businesses fit out the space.</p> <p>Long term to 30/4/21 – business responsible for design, construction and maintenance.</p> <p>Car spaces used for outdoor dining.</p> <p>Used fences, planter boxes and decking.</p> <p>Documents: Outdoor Dining Design Guidelines</p> <p>https://www.mornpen.vic.gov.au/About-Us/News-Media-Publications/News-Media/Peninsula-parklets-program-extended-until-30-April</p>
Lismore	Lismore CBD Parklet Trial	<p>Two parklets created as a trial.</p> <p>Seating, vegetation and dog drinking station.</p> <p>https://www.nbnnews.com.au/2020/12/19/colourful-parklets-bringing-new-life-to-lismores-cbd/</p>

Cardinia	Parklet Partnership Program	Businesses host parklets, looking after the maintenance and upkeep. Council provides permits and install the parklets. Expression of interest process including a road safety audit and site assessment. https://creating.cardinia.vic.gov.au/index.php?CID=684
North Sydney Council	The Mobile Parklet	EOI for temporary, mobile parklets. No charge for use of the parklet during the trial. https://www.northsydney.nsw.gov.au/Council_Meetings/Council_News/Latest_News/The_Mobile_Parklet
Port Macquarie	Port Macquarie CBD	EOI for a two year trial of one parklet. Businesses invited to submit a concept. Council outdoor dining space fees and rates for the parklet apply. The construction and maintenance costs associated with parklets are funded by the operator and/or property owner. The operator and/or property owner is responsible for ensuring that the area remains clean and attractive. https://www.pmhc.nsw.gov.au/Business/Business-Registrations-and-Licences/Approvals-and-licences/Outdoor-Dining-Parklet-Trial

*The Streets as Shared Spaces grants program and its replacement, the Your High Street grant program, have now closed.

Program Summary:

Key themes emerged from this research:

- 1) Victorian programs were funded by the State Government and as such parklets were provided by local councils.
- 2) Expressions of Interest were common to establish parklets outside businesses.
- 3) Businesses generally look after the cleaning and maintenance of parklets.
- 4) Trials have been popular and generally vary in length.
- 5) User safety is a priority and sites are selected based on road safety audits/assessments.
- 6) Parklets are commonly used for outdoor dining, particularly in Victoria, and passive activities.

Parklet Suppliers

Name	Location	Description
People Parkers	Marrickville NSW	People Parkers have been installing and maintaining parklets in public spaces since 2015. www.peopleparkers.com
Wotbox	Albury NSW	Wotbox is Australia's premier designer of bespoke containers for bars, cafes, kitchens and events.
DC Innovations	Albury NSW	New local company specialising in shipping container solutions.

There is great potential for the local community to play an active role in the design, construction and installation of parklets if a trial progresses.

The Albury manufacturing sector has ample skills and capacity to produce drop in parklets.

AlburyCity may consider an expression of interest process to select a supplier of the parklets with a weighting for local suppliers.

Benefits of Parklets

Parklets change how people view and use public space. With relatively low capital expenditures, they create new spaces for community gatherings and commercial activity.

The benefits of the parklets are different for the community and business.

Parklet benefits to the community:

- Foster a sense of community by creating welcoming public spaces.
- Increase community involvement in the area where parklets are installed.
- Provide more space for people where footpaths are narrow or congested, improving the pedestrian experience.
- Provide attractive places for people to sit, relax, dine and enjoy the city.
- Increase the time people spend socialising, making new connections and interacting in a location.
- Provide opportunities for art and culture.
- Provide an alternative for people to relax while waiting for appointments, public transport or to rest while shopping.
- Encourage people to walk, cycle or take public transport into busier areas.
- They make the streets more attractive, interesting and lively.
- Create a sense of place in a neighbourhood and a pride in the community.
- They create safe destinations with vehicle protection for a range of activities.
- A better use of space. More people can enjoy a space that only accommodated vehicles. People friendly purposes for parking spaces.

Parklet benefits to nearby businesses:

- Increase economic activity.
- Increase in income through additional pedestrian traffic.
- Encourages people to stay longer in the area.
- More potential customers.
- Increase in seating capacity for dine in or takeaway food.
- Increases awareness by making businesses more visible and attractive to parklet users.
- Businesses will become more distinctive, well known and popular among the local population.
- Provides flexibility in challenging times eg. COVID 19 restrictions.
- Customers generally love parklets!

Disadvantages of Parklets

It would appear that parklets generally add value to a commercial area but there are some disadvantages:

- Seasonal challenges including hot and cold temperatures mean they are not always accessible.
- Parking is reduced in order to create a parklet area.
- Social impacts including becoming a hotspot for homelessness, illegal activity and late-night rowdiness.
- Are they community or commercial spaces?
- If not designed well, they won't get used.
- Surrounded by traffic, impacted by noise and exhaust fumes.
- Have an impact on traffic movement including more cars looking for parking and driver distraction.
- Businesses who are not close to a parklet may suffer from natural migration to parklet locations.
- They take up loading zones and restrict deliveries to businesses.

Car Parking

“Autonomous vehicles, public transportation, rideshare, all these things are making parking less important. We have all this space in which we can do incredible” (Henry Van Moyland, Mid City West Community Council in the US)

Streets are places for people as well as cars. Up to 10 people can be accommodated in a parking space which provides numerous outdoor opportunities. To draw a comparison, the opportunity lost for a car that has four occupants and parks for one hour is up to 20 people (assuming 10 people stay for 30 minutes) using a space in the same hour.

The loss of a parking space adjacent to a business may not have a direct effect on that business. This will be influenced by the destination of the vehicles occupants, how long they stay and their direct expenditure.

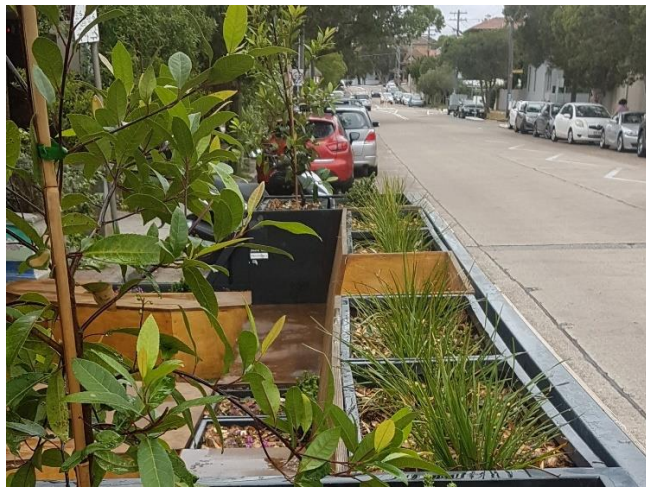
There are over 3500 car parking spaces (time limited and all day) in the Albury CBD. There are over 70 car parking spaces in Corella Street and a similar number in Waugh Road behind the Mate Street precinct.

Car parking is an important issue for people with a disability or health issues and under these circumstances the ability to park as close as possible to the shopping destination is a priority.

Gallery



Junction Place Wodonga (VIC)



Waverley (NSW)



Mildura



Moreland (VIC)



Tweed (NSW)



City of Greater Geelong (Ocean Grove)



Cardinia



Lismore (NSW)



Port Phillip



Wangaratta



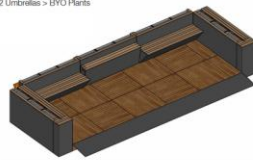
Should our thinking be confined to single level? (Wotbox)

ARRANGEMENT EXAMPLES

12 Square Metre Perimeter > Closed Back
Perimeter > 80cm Back >
2 Umbrellas > 54 Plants Included



12 Square Metre Perimeter > Open Back Perimeter >
2 Bench Seats >
2 Umbrellas > 54 Plants



8 Square Metre Perimeter > Closed Back
Perimeter > 80cm Back >
36 Plants Included



8 Square Metre Perimeter > Open Back
Perimeter > 80cm Back >
36 Plants Included



Work with us to create the perfect arrangement for your needs and budget.
Please note: Impact barriers are to be hired separately. Docking platforms included in above pricing.

people
parkers

Perimeter Parklet (People Parkers)



Port Macquarie Concepts



Mobile Parklet (People Parkers)